

BOOKING FORM

If you have already made a reservation by telephone, e-mail or letter, this will be held for you for **FOURTEEN DAYS**. Please confirm by returning this form along with your deposit. The balance should be paid **FOUR WEEKS** before your arrival. From Nov to Apr we will accept last minute short breaks when the booking is made within 2 weeks of the arrival date.

Name:.....

Address:.....
.....
.....

Telephone:.....

Number of Guests:.....

Will you require Cot: Y/N

Pet: Y/N

I wish to book "Dales Cottage"

From:.....

To:(inclusive)

I enclose a deposit of £.....

(£50 per week deposit)

Cheques are made payable to Mrs D Allenby.

Please return booking form to:

Mrs Deborah Allenby

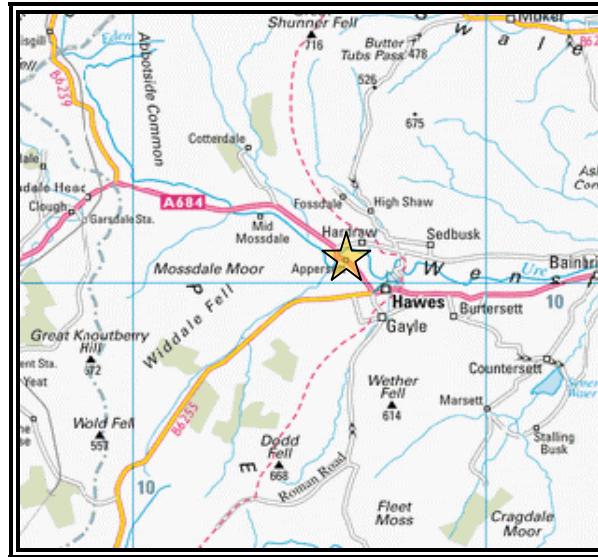
Yorecroft

Carperby

Leyburn

North Yorkshire DL8 4DA

DIRECTIONS



From the East and the A1:

Leave the A1 at Leeming Bar and take the A684 for Hawes, Turn right at the T-junction in Bedale and follow signs for Leyburn where you turn left at the Bolton Arms mini-roundabout. Go straight on to Hawes. Leave Hawes on the A684 towards Sedburgh. After 1 mile you will come to Appersett. Turn left immediately after the small hamlet of houses and the cottage is the first one on the second row back from the road.

From M6 Northbound

Leave the M6 at Junction 34 and head for Hawes via Ingleton. 15 miles after Ingleton and 2 miles before Hawes there is a brown tourist sign for 'Tarney Fors' pointing to the right - don't turn here but continue for 400 metres to a left turn. Take this turn and follow the single track lane for mile. At the end of this road is a T junction and the village of Appersett. Turn into the hamlet of houses on your right and the cottage is the first one on the second row back from the main road.

From M6 Southbound

Leave the M6 at Junction 37 and head for Hawes through Sedburgh, on the A684. 14 miles on from Sedburgh is the hamlet of Appersett. In Appersett the road turns sharp right over a bridge and then left over a second bridge with name of Appersett on a boulder. Immediately after the bridge turn right into a small hamlet of houses. The cottage is the first one on the second row back from the road.

Dales Cottage



"...idyllic and restful. The perfect holiday!"

Dales Cottage

Appersett

Hawes

North Yorkshire

DL8 3LN

Tel: 01969 663533

E-mail: dalescottage@yahoo.co.uk

www.dales-cottage.com

THE COTTAGE

Charming stone built 2-bedroom holiday cottage set in the quiet hamlet of Appersett in the heart of the Yorkshire Dales National Park. It is a real home from home; tastefully furnished and well equipped to make your stay just perfect.

LOCALITY

Situated only 1 mile from Hawes, Dales Cottage offers both a tranquil setting along with all the amenities of a bustling market town.

This is an ideal central location if you want to explore the picturesque and challenging countryside of the Yorkshire Dales on your doorstep, or even the spectacular lake district which is less than an hours drive away.



TARIFF:

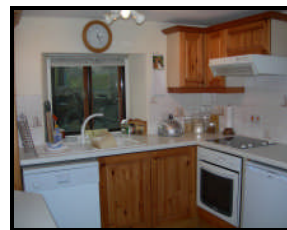
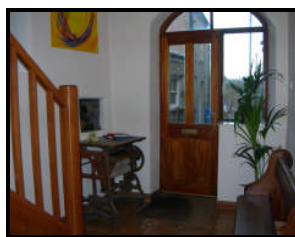
Charge for the week commencing

Friday..... is

£.....per week.

ACCOMMODATION

An impressive open hallway with high exposed beams immediately greets you.



This is the ideal spot to kick off your walking boots before relaxing in the comfortable living room with the log burner, which is perfect for those cooler evenings. The kitchen is extremely well equipped and very user friendly. Downstairs you will find the following facilities

- Electric cooker and Hob
- Microwave
- Dishwasher
- Fridge and Freezer
- TV, Video and DVD player
- CD player and Radio



Upstairs there are 2 double bedrooms one with twin beds and the master bedroom with a double. The bathroom has a bath with a shower attachment and plenty of airing space should you need it.

Electricity, oil and an initial supply of fuel for the log burner are included in the rent and there is also a payphone. One well behaved pet. No smoking. Friday to Friday bookings please.

Other facilities available: Private parking, cot & high chair and small outdoor patio area with seating. All bed linen is provided in the rent however guests should provide their own towels. There is a 24-hour service wash facility in Hawes.

GENERAL AREA

Local Attractions in Hawes

Hawes is said to be one of the highest market towns in England and a great deal of history is reflected in the unique character of present day Hawes. There are many things to see and do some of which are;

- The award-winning Dales Countryside Museum
- The Wensleydale Creamery Visitor Centre gives an insight into life in the Dales.
- Hawes Ropemaker, where visitors can watch both the mechanical and handmade aspects of rope making.
- A popular weekly market is held in the town every Tuesday,
- There are a good a range of shops, craft workshops and tearooms.

Ingleborough Caves

Ingleborough Mountain, is renowned for it's caves and potholes. The area contains a labyrinth of underground passages and watercourse hollowed out of the rock over thousands of years.

Ribblehead Viaduct

The famous Ribblehead Viaduct has twenty-four magnificent arches spanning the floor of the Pennines. This is probably one of the most famous railway bridges in the UK, if not the world!

White Scar Caves

White Scar Cave is the longest show cave in Britain. It is a beautiful hidden landscape with streams; strange cave formations, and a huge ice-age cavern with thousands of stalactites.

Local Walks and Fishing

There is information at the cottage detailing the fabulous local walks and the popular fishing spots as well as other places of interest.